

PROJECT DESCRIPTION

The main components of the Firehouse Construction Project are anticipated to include:

- New construction consisting of two stories of masonry structure including six apparatus bays with an overall footprint of approximately 115' x 140'.
- The first level consisting primarily of apparatus and accompanying rooms dedicated to the operation of the fire district. Additionally, a dedicated community space with separate bathroom facilities will be provided to accommodate 100 people.
- The second level will serve as the main floor for fire district offices, a common area, and storage. The occupied area of the second floor is approximately half of the building footprint, and the remaining square footage will be open to the floor below.
- The new construction will provide needed storage for equipment and lifesaving materials, as well as adequate interior training space within the structure. In addition, ample space for maintenance of fire apparatus and accessories such as fire hoses will be completed interior.
- The new firehouse will be equipped with a state-of-the-art exhaust extraction system and energy efficient HVAC and lighting systems.
- Building materials including finishes shall be selected to ensure efficiency, durability, and longevity.
- The proposed location of the new facility will allow for connection of both the sanitary and potable water to the existing town provided utility. Stormwater will be completed on-site to accommodate runoff.

FINANCIAL FACTS

The Port Ewen Volunteer Fire Department members are also taxpaying members of the community and we have attempted to keep project costs as low as possible. Delaware Engineering has prepared preliminary plans and cost estimates to determine the most cost-effective way to construct the addition. Based on a total project budget of \$6.5M the anticipated cost to the average property owner in the fire district will be approximately \$211.89/year. We are pursuing potential grant money in order to reduce the financial burden on taxpayers.

- **Total Project Budget:** **\$6,500,000** All Costs Included
- Financing: Assume 4% interest for 30 years
- Annual Debt Payment: \$375,895.64
- 2021 District Taxable Assessed Value (AV): \$328,648,603
- 2021 Taxable Parcels: 1774
- 2021 Average Taxable AV: \$185,258.51
- Annual Debt Service Cost per 1000 of AV: \$1.1438
- **Annual Cost to Average Property Owner: \$211.89**
- **Monthly Cost to Average Property Owner: \$17.66**

PORT EWEN VOLUNTEER FIRE DEPT.
P.O. BOX 832
Port Ewen, NY 12466

PRESORTED
NON-PROFIT
U.S. POSTAGE PAID
KINGSTON, NY 12401
PERMIT NO. 44946

PORT EWEN VOLUNTEER FIRE DISTRICT FIREHOUSE CONSTRUCTION PROJECT

FACT SHEET

PROJECT INFORMATION IS ALSO POSTED ON THE FIRE DEPARTMENT WEBSITE:

www.pefd.org

**POSTAL PATRON
PORT EWEN, NY 12466**

PLEASE JOIN US!

TO LEARN MORE ABOUT THIS IMPORTANT PROJECT

Public Information Meetings:

- | | |
|---|--|
| Tuesday, September 7 th , 2021
1:00 PM – 3:00 PM | Esopus Town Hall
284 Broadway, Ulster Park, NY 12487 |
| Monday, September 13 th , 2021
7:00 PM – 9:00 PM | Department Headquarters
129 Legion Court, Port Ewen, NY 12466 |
| Saturday, September 18 th , 2021
11:00 AM – 1:00 PM | Department Headquarters
129 Legion Court, Port Ewen, NY 12466 |

Fire District Referendum Election:

Tuesday, September 21st, 2021
6:00 PM – 9:00 PM
129 Legion Court, Port Ewen, NY 12466

PORT EWEN FIREHOUSE CONSTRUCTION PROJECT

PROJECT HISTORY

The Port Ewen Volunteer Fire Department has served the Port Ewen community since 1896. The fire district covers approximately 12 square miles. There are currently 58 active dedicated members that spend countless hours training for a wide variety of emergencies; giving up their family, work and personal time to ensure the safety of the community. The department is the only one within the town that has a ladder truck and responds to surrounding departments upon request. In 2020, the company responded to 124 fire calls including 23 mutual aid calls. The fire department rolls out on emergencies at any hour, day or night, without knowing what tragic situation they will face. There is no call the 100% volunteer department will not respond to. All volunteer members are thoroughly trained in the following emergency situations: active shooter, auto extrication, brush, car and chimney fires, pump operations, emergency vehicle response, hazardous materials, ice water rescue, search and rescue, solar panel response, CPR, Basic and Advanced Life Support, and NARCAN administration among others.

During the COVID pandemic our volunteers continued to respond any time, day or night, with the focus of serving the community and keeping them safe in uncertain times. We have been on the front lines of the community during this pandemic for emergencies as well as birthday drive-bys, welfare checks on community members and giving back to the community through donations. In return, we hope the community will help provide our first responders with a safe environment as their training and tasks become more challenging in this modern world. For three years, the department has worked with Delaware Engineering, fire personnel, and local residents in open meetings to plan and design a simple, affordable firehouse that meets current apparatus size and safety standards.

The Port Ewen Fire District welcomes you to attend one of three public meetings where we will tour the existing fire department buildings, explain the design and costs of the proposed new firehouse and answer questions. The public meetings are scheduled for:

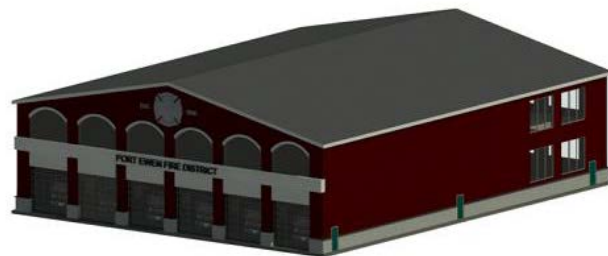
Tuesday Afternoon, September 7th from 1 to 3 PM @ Esopus Town Hall

Monday Evening, September 13th from 7 to 9 PM @ Department Headquarters

Saturday Morning, September 18th from 11 AM to 1PM @ Department Headquarters

A Special District Election will be held on Tuesday Evening, September 21st from 6 to 9 PM @ Department Headquarters

to vote upon appropriations for the firehouse construction project.



Firehouse Sketch

PORT EWEN FIREHOUSE CONSTRUCTION PROJECT

PROJECT NEED

The existing Port Ewen firehouses were designed and constructed to meet the needs and demands of the fire district at the time. However, current day apparatus and regulations deem the existing structures unacceptable in terms of current safety standards and serviceability:

- **Safety of Fire Volunteers** – The limited space between trucks and equipment endangers fire personnel. In the first bay only 2' exists between the truck and the wall and only 1' to where personnel put on gear. The National Fire Protection Association requires a minimum of 6' between apparatus and between a wall and apparatus, with distances in excess of 6'. Turnout time (response) is lengthened by the need for personnel to move to safe areas or wait until trucks have pulled out to put on gear. Longer turnout times endanger victims, increase potential damage and can cost lives!
- **Limited Bay Size** – The Port Ewen Fire District is one of the few neighboring mutual aid companies that can respond for standby coverage during the winter. Due to the limited size of the garage, others are unable to store their apparatus inside the garage. Other fire districts' apparatus does not fit due to the limited bay length and bay door height. In addition, when purchasing and replacing apparatus, the fire district is required to pay more for custom apparatus, as the manufacturers' standard apparatus is too large for the existing bays.
- **Limited Equipment Storage** – A compressor was purchased several years ago to save the ongoing cost of refilling air bottles. This equipment should be protected by a barrier such as a short wall. Equipment needed for structure fires, ice rescues, vehicle accidents and other emergencies are crowded in the back and sides of the garage where they are difficult to access swiftly and safely when needed.
- **Volunteer Training Space** – During cold months the required volunteer training must often be held off-site due to the lack of safe space within the truck garage.
- **Maintenance of Expensive Equipment** – Necessary maintenance of trucks and equipment such as hoses cannot be done outside during the winter months due to freezing temperatures or inside due to the crowded interior conditions.
- **Deterioration of Existing Garage** – The northwest corner of the rear wall of the garage is crumbling due to the lack of proper gutters and stormwater drainage over the years. This section of the existing wall needs to be repaired or rebuilt.

The Port Ewen Volunteer Fire Department and its members have been an integral part of the community that have gone above the call of duty in a number of ways to better the lives of everyone around them. From hosting community events like the Bazaar and monthly pancake breakfasts to providing prevention training throughout the community, donating to charitable causes and providing a scholarship to a graduate in the community. Our members strive to give back not only in a person's time of need as an emergency provider but as a community member as well.